

# axiom<sup>®</sup>

bone**LEVEL**



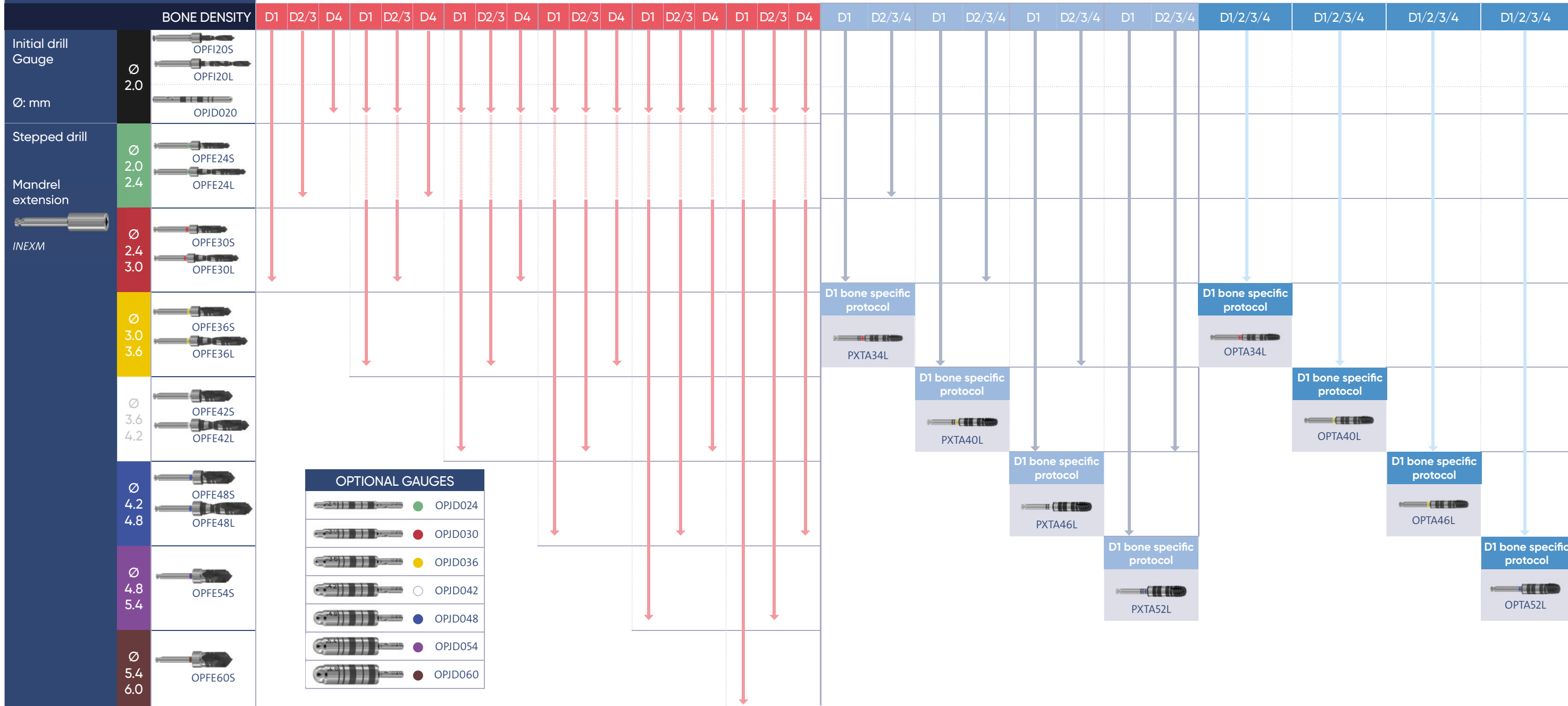
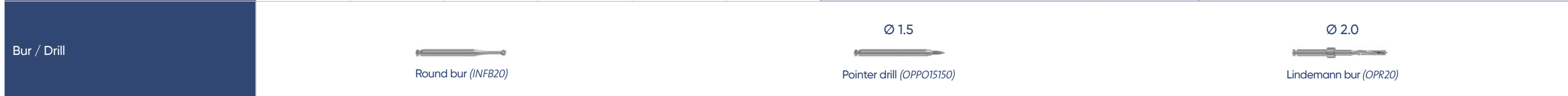
**COMPONENTS  
OVERVIEW.**

# AXIOM® BONE LEVEL SURGICAL COMPONENTS

# AXIOM® BONE LEVEL SURGICAL COMPONENTS

IMPLANT RANGE	axiomX3®						axiomPX				axiomREG										
STERILE																					
Cover screw included																					
OPIM100																					
length (mm)	6.5	8	10	12	14	16	18														
	Ø 3.4	Ø 4.0	Ø 4.6	Ø 5.2	Ø 5.8	Ø 6.4	Ø 3.4	Ø 4.0	Ø 4.6	Ø 5.2	Ø 3.4	Ø 4.0	Ø 4.6	Ø 5.2							
	XT34080	XT40060	XT46060	XT52060	XT58060	XT64060	PX34080	PX40060	PX46060	PX52060	OP34080	OP40060	OP46060	OP52060							
	XT34080	XT40080	XT46080	XT52080	XT58080	XT64080	PX34100	PX40080	PX46080	PX52080	OP34100	OP40080	OP46080	OP52080							
	XT34100	XT40100	XT46100	XT52100	XT58100	XT64100	PX34120	PX40100	PX46100	PX52100	OP34120	OP40100	OP46100	OP52100							
	XT34120	XT40120	XT46120	XT52120	XT58120	XT64120	PX34140	PX40120	PX46120	PX52120	OP34140	OP40120	OP46120	OP52120							
	XT34140	XT40140	XT46140	-	-	-	PX34160	PX40140	PX46140	-	OP34160	OP40140	OP46140	OP52140							
	XT34160	XT40160	-	-	-	-	PX34180	PX40160	-	-	OP34180	OP40160	-	-							
	XT34180	XT40180	-	-	-	-	-	PX40180	-	-	-	OP40180	-	-							

HEALING SCREW	HEALING SCREWS AND COVER SCREWS							
	Ø 3.4 mm		Ø 4.0 mm		Ø 5.0 mm		Ø 6.0 mm	
Coronal height	2 mm	1 mm	2 mm	1 mm	2 mm	1 mm	2 mm	1 mm
Gingival height								
0.75 mm								
			OPHS400	OPHSF400	OPHS500	OPHSF500		
1.5 mm								
	OPHS310	OPHSF310	OPHS410	OPHSF410	OPHS510	OPHSF510	OPHS610	OPHSF610
2.5 mm								
	OPHS320	OPHSF320	OPHS420	OPHSF420	OPHS520	OPHSF520	OPHS620	OPHSF620
3.5 mm								
	OPHS330	OPHSF330	OPHS430	OPHSF430	OPHS530	OPHSF530	OPHS630	OPHSF630
4.5 mm								
	OPHS340	OPHSF340	OPHS440	OPHSF440	OPHS540	OPHSF540	OPHS640	OPHSF640



OPTIONAL GAUGES	
	OPJD024
	OPJD030
	OPJD036
	OPJD042
	OPJD048
	OPJD054
	OPJD060



COVER SCREW	Bone Height				
	0.5 mm	1.0 mm	1.5 mm	2.0 mm	2.5 mm
	OPIM100 Included with each implant	OPIM110	OPIM115	OPIM120	OPIM125

Countersinks for optimized bone crest preparation	
Countersinks with pin	
Ø 4.5 mm	OPFF45
Ø 5.3 mm	OPFF53
Ø 6.6 mm	OPFF66



\*Diameters 5.8 and 6.4 only available for Axiom X3®



# AXIOM® BONE LEVEL PROSTHETIC COMPONENTS

IMPRESSION				TEMPORIZATION							
CONVENTIONAL		DIGITAL		Temporary abutments <b>STERILE</b> 25 N.cm M 1.6 titanium screw included OPTS161 Hexagonal wrench Extractable with INEXPS/L	Gingival height	Ø 3.4 mm	Ø 4.0 mm	Ø 5.0 mm	Ø 6.0 mm		
Short	Long										
Pop-in transfer  Screw included 	 OPP1100S (x1) OPP1100S-4 (x4)	 OPP1100 (x1) OPP1100-4 (x4)	Digital metal transfer Single unit (screw included)  152-27-MDT	   	-	-	-	-	-		
	 OPPU100 (x1) OPPU100-4 (x4)	 OPPU100L (x1) OPPU100L-4 (x4)	PEEK digital transfer Single unit (screw included)  152-27-DT								
Pick-up transfer  Long and short screws included 	 OPPU101  OPPU102	 OPPU102  OPPU102L	 Laboratory Scan Adapter SA screw-driver  152-27-SAA SATOOL-01	 0.75 mm - OPTP400 OPTP500 -	-	-	-	-	-		
	Compatible gingival height 1.5 mm  OPROFIL410	 OPROFIL510									1.5 mm OPTP310 OPTP410 OPTP510 OPTP610
	2.5 / 4.5 mm  OPROFIL420	 OPROFIL520									
3.5 mm  OPROFIL430	 OPROFIL530	3.5 mm OPTP330 OPTP430 OPTP530 OPTP630									
Analog  M1.6 titanium screw included 	 OPIA100 (x1) OPIA100-4 (x4)		Analog for printed model - single restoration  152-27-PA (x1) 152-27-PA-4 (x4)	Wrench for analog for printed model  PA-TOOL-01	4.5 mm OPTP340 OPTP440 OPTP540 OPTP640	-	-	-	-	-	

This document shows a large part of Axiom® range. For full range, see Axiom® catalog.